

# HILTON BALI RESORT

1st DECEMBER 2016



  
**Hilton**  
HOTELS & RESORTS

# WELCOME

Welcome to Hilton Bali Resort, marking the brand return to the island on December 1st 2016 through a rebranding.

Situated in the southern part of Bali, in the prestigious Nusa Dua area, the resort is only 20 minutes' drive from Ngurah Rai International Airport, lifestyle centres of Kuta and Seminyak, as well as the capital of Bali, Denpasar via the new Bali Mandara Toll Road. The resort is just a few minutes' drive from Bali National Golf Course and Bali Collection Shopping Center.

Sitting atop a 40-meter cliff, with stunning views of the Indian Ocean, Hilton Bali Resort offers 389 well-appointed rooms and suites and 19 luxurious villas. The resort is famous for its breathtaking sights from the majority of its rooms, extensive lush gardens and one of the most picturesque secluded beaches on the island. Tropical atmosphere and Balinese traditions are reflected in its design and warm service delivery.

The resort is also a choice destination for events, conferences, exhibitions, and banquets. Options include two conference centres; pillarless ballrooms, flexible meeting rooms, multiple pre-function areas and a variety of indoor and outdoor options, as well as ocean-facing wedding chapels for intimate weddings and renewing of 'vows'. Enjoy an array of recreational facilities including 4 interconnected swimming pools, Jungle Kids Club, 8 semi-outdoor private spa villas and 6 dining options specializing in Japanese, Balinese and international cuisine.



# RESORT MAP



## LEGEND

- A** VILLAS (5001 - 5020)
    - A 1 : Villa Lounge
  - B** GRAHA PARUMAN
    - B 1 : Gift Shop
    - B 2 : Kamita Wedding Gazebo
  - C** SOUTH WING (3101 - 3522)
  - D** LOBBY AREA
    - D 1 : Gift Shop
    - D 2 : *Shiki Japanese Restaurant, Delicatessen*
    - D 3 : *Brasserie des Célébrités, La Terrazza*
    - D 4 : *Paon Bali Resto & Bar*
    - D 5 : Taman Sari
  - E** NORTH WING (2201 - 2624)
    - E 1 : Wiwaha Wedding Chapel
    - E 2 : Temple
    - E 3 : Temple Garden
  - F** CLIFF TOWER (0103 - 1416)
    - F 1 : Jungle Kids Club
    - F 2 : Fitness Center
    - F 3 : Executive Lounge
  - G** POOL LEVEL
    - G 1 : Mandara Spa
    - G 2 : Pool Side Garden
    - G 3 : Beach Front Garden
    - G 4 : *The Shore Restaurant and Bar*
    - G 5 : Kupu - Kupu Amphitheater
  - H** GRAHA SAWANGAN
  - I** TENNIS COURTS
  - J** SERENITY BEACH GARDEN
- : Room  
 : Restaurant  
 : Outdoor Venues

# GUEST ROOMS (270 rooms)

Section Header 16



- From 48-50 sqm, King and Twin rooms with balcony facing the Indian Ocean or lush gardens. 36 connecting rooms available.
- **Garden View:** 64 rooms, 48 sqm, King (36 rooms) and Twin (28 rooms)
- **Deluxe Ocean View:** 136 rooms, 48 sqm, King (64 rooms) and Twin (72 rooms including 1 accessible room)
- **Premium Ocean Front:** 70 rooms, 50 sqm, King (39 rooms) and Twin (31 rooms). Located in the Cliff Tower, close to the pool with easy access to the beach.

# FAMILY ROOMS (32 rooms)

Section Header 17



- Each 50 sqm with two room choices that fit 2 adults and 2 kids comfortably: King bed and bunk beds (16 rooms) or two queen beds (16 rooms). Both rooms can be connected to be a Family Suite.
- Complimentary access to Jungle Kids Club for children aged 4 to 12.
- Private balcony facing swimming pools, gardens and beach.
- Located in the Cliff Tower, close to the pool and with easy access to the beach.

## EXECUTIVE ROOMS (74 Rooms)



- From 50sqm, all rooms are located in the Cliff Tower, close to the pool and with easy access to the beach.
- Access to Executive Lounge with private swimming pool and cabanas, serving daily breakfast, afternoon tea, evening cocktails and all-day refreshments, as well as access to Jungle Kids Club for children aged 4-12 years old.
- **Executive Ocean View** : 44 rooms, 50 sqm, King (23 rooms) and Twin (21 rooms)
- **Executive Terrace Ocean View**: 14 King rooms, 73 sqm with a spacious terrace facing the Indian Ocean.
- **Executive Lagoon**: 16 rooms, 53 sqm, King (7 rooms) and Twin (9 rooms) with direct access to swimming pool.

# SUITES (13 Suites)



- From 100 sqm, all suites feature spacious private balcony overlooking the Indian Ocean, separate living room and dining area
- Inclusive of access to Executive lounge as well as Jungle Kids Club
- **One Bedroom Suite Ocean View (9 Suites):** 100 sqm King and Twin Suites
- **Two Bedroom Royal Suite Ocean View (3 Suites):** 200 sqm King and Twin Suites, with a kitchenette.
- **Two Bedroom Presidential Suite Ocean View (1 Suite):** 400 sqm two-storey Suite with King and Twin bedrooms, with kitchenette and working space.

# NUSA DUA VILLAS (19 Villas)



- A private sanctuary exclusively located in a 2-hectare luxurious villa compound, with access to both Villa and Executive Lounges

- **One Bedroom Pool Villa:** 17 villas, 300 sqm, King Bed, private swimming pool, semi-open gazebo with a living area, spacious terrace, overlooking the Indian Ocean or lush gardens.

- **Two Bedroom Pool Villa:** 1 villa, 895 sqm, 1 King and 1 Twin Bedroom; each bedroom will have its own en-suite bathroom and walk-in closet, 17m X 6m private swimming pool, living and dining room and a kitchenette

- **Three Bedroom President Pool Villa:** 1 duplex villa, 1,080 sqm, 2 King and 1 Twin Bedroom; each bedroom will have its own en-suite bathroom and walk-in closet, 15m X 6m private swimming pool with spacious terrace area, living room, dining area, kitchenette and spacious poolside terrace.



# ROOM INVENTORY

ROOM TYPE	Size (Sqm)	No. of Rooms
Guest Rooms	48 - 50	302
Executive Rooms	50 - 73	74
Suites	100 - 400	13
Villas	300 - 1080	19

# THE PROPERTY

## EXECUTIVE LOUNGE

- Available for Executive rooms and villa guests, the Executive Lounge is located on the third floor of Cliff Tower.
- Featuring indoor and outdoor dining areas, a private infinity pool and cabanas (for adults only) overlooking the Indian Ocean.
- Serves daily breakfast, afternoon high tea, evening cocktails and all-day refreshments.
- *Dress code applies. Children must be supervised at all time by an adult when in the Executive Lounge.*

## VILLA LOUNGE

- Exclusive access to villa guests only, the Villa Lounge is located within the separate 2-hectare compound, offering 24-hour butler service and personalized check-in/check-out.
- Featuring indoor and outdoor dining area overlooking the tropical lush garden, daily breakfast, afternoon tea, evening cocktails and all-day refreshments.



# THE PROPERTY

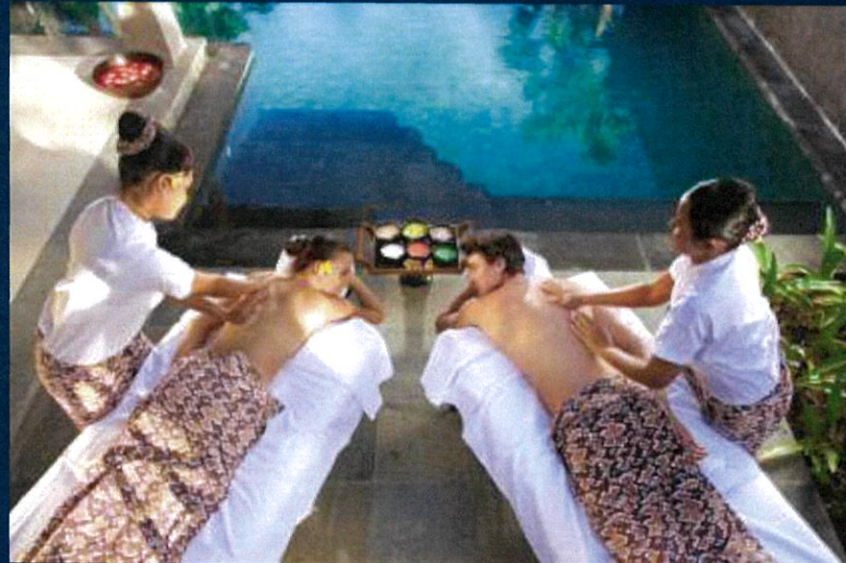
## PLAY

### FAMILY-FRIENDLY LEISURE FACILITIES

- Direct access to Sawangan and Serenity beach, with private cabanas and sun-loungers
- 360-degree Observation Tower with stunning panoramic Indian Ocean views
- 4 interconnected swimming pools with Children's lagoon, sand pool and 30m water slide
- Jungle Kids Club with indoor and outdoor playground, and daily kids activities
- 3 covered tennis courts, a fitness center with sauna, steam bath, outdoor and indoor jetted tubs as well as guest wellness activities

### MANDARA SPA

The resort's Spa is operated by Mandara Spa, a global spa management company, founded in Bali. It offers a wide range of Balinese massages and body treatments that can be enjoyed in 8 well-appointed semi outdoor spa villas, the beach-side 'bale' or an indoor treatment room. All treatments are provided by trained spa therapists, who combine modern techniques with International and Balinese natural products known for their ancient health and beauty properties for relaxation and rejuvenation.



# EAT

## SHIKI JAPANESE RESTAURANT



Located in the lobby level with a seating capacity for 121 guests, featuring a Teppanyaki counter, Nabemono table, Sushi and Sashimi Bar and 5 private dining rooms. The restaurant offers authentic Japanese Cuisine for lunch and dinner in the contemporary ambience overlooking the Indian Ocean.

## THE SHORE RESTAURANT & BAR



Designed as an interpretation of a ship on stilts, this three-storey restaurant offers an array of Asian and International cuisines in a casual ambience by the beach. Total capacity of 210 seats divided into semi-outdoor al fresco setting at the first floor; beach bar and a sunken pool bar; indoor dining at Aqua Mezzanine 2nd level; and a rooftop on the 3rd level.

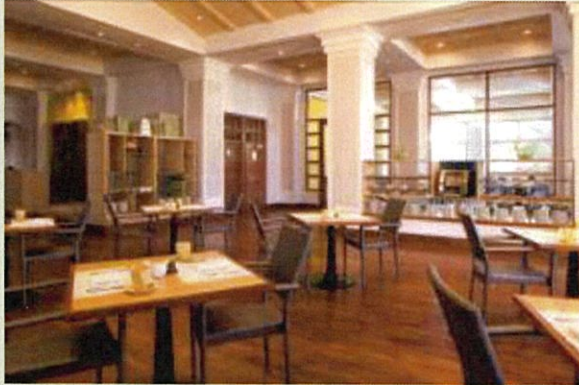
## PAON BALI RESTO & BAR



Located at the lower lobby, this newly refurbished Balinese restaurant can accommodate up to 60 persons. Featuring indoor and semi-outdoor seating with open kitchen concept, this restaurant offers a wide choice of authentic Balinese cuisine and specialty drinks at the Bar.

# EAT

## BRASSERIE DES CELEBRITIES



Ideally located on lower lobby level, Brasserie des Célébrités opens for daily serving international buffet breakfast. Its indoor and al fresco setting overlooking the lush gardens and the Indian Ocean, Brasserie des Célébrités can accommodate up to 280 seats.

## LA TERRAZZA



Located on the lower lobby level, La Terrazza accommodates up to 74 guests for dinner. Italian cuisine as well as a globally inspired selections can be enjoyed at the casual open air terrace and garden overlooking the Indian Ocean.

## DELICATESSEN

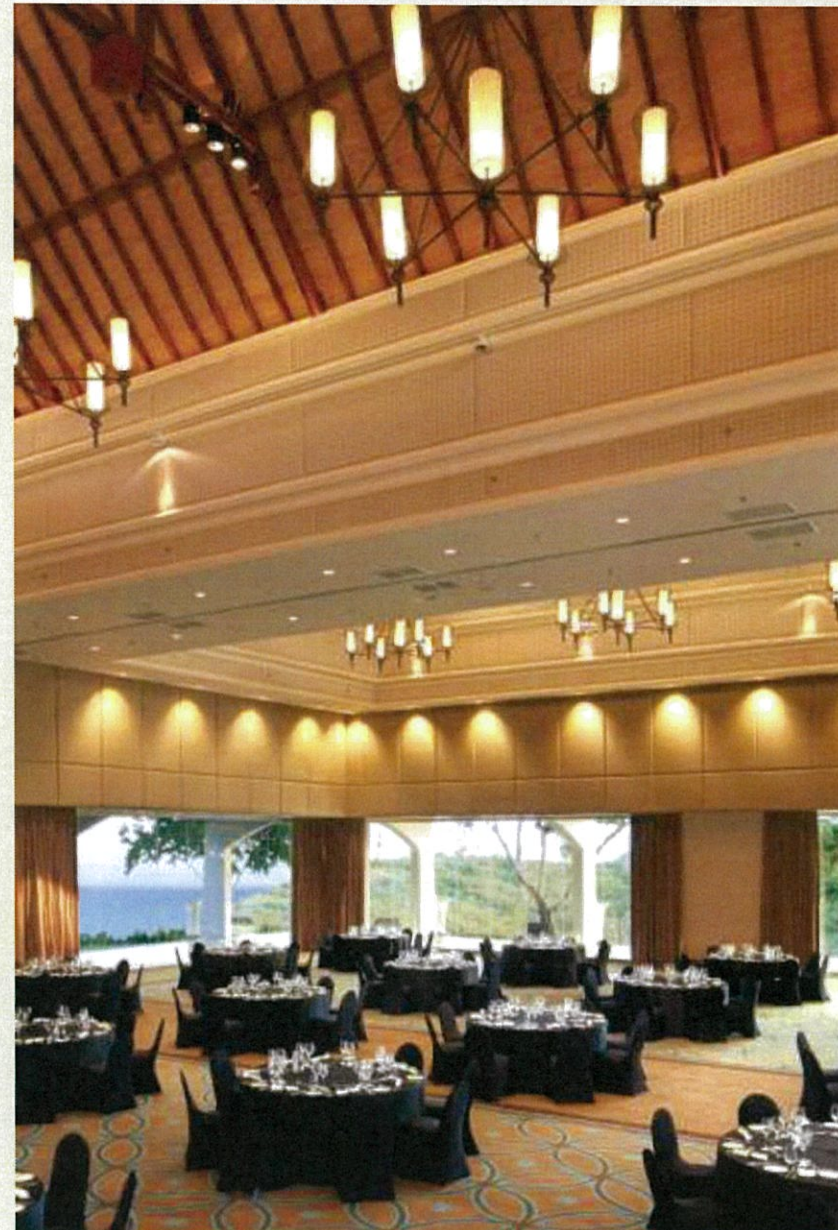


Located on the lobby level with maximum capacity of 16 seats, Delicatessen serves a fresh selection of coffees, teas, refreshing drinks and light meals including freshly baked pastries and breads, chocolates and other delicacies to take away.

## MEET

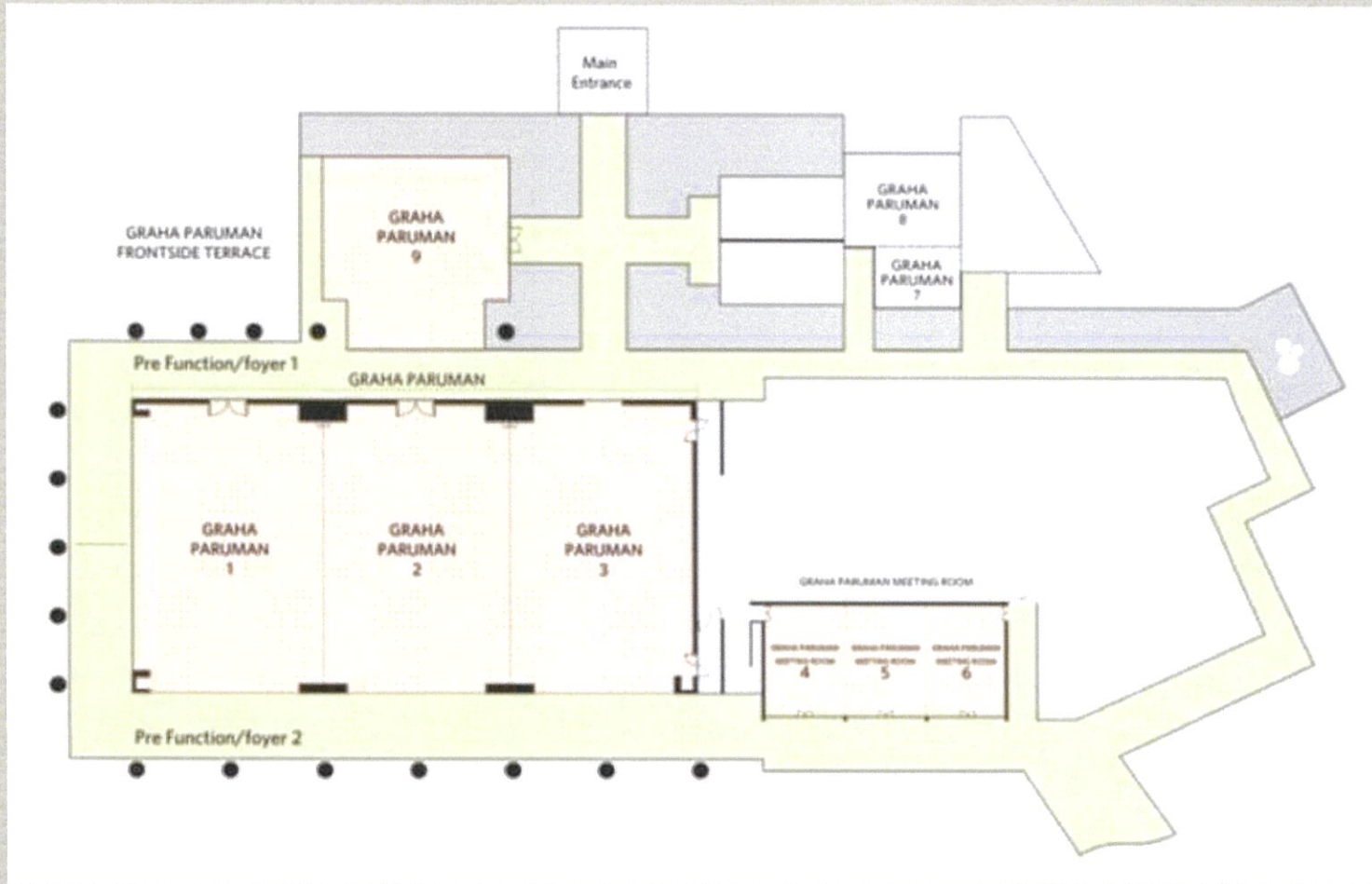
### MEETINGS, CONFERENCES & SOCIAL EVENTS

- A total of 8,470 sqm versatile indoor and outdoor event for 20 up to 1,500 delegates
- 2 conference centres with 2 pillarless ballrooms with up to 8.6 m ceiling height, divisible into individual rooms, total 9 breakout rooms and multiple pre-function areas. Flexible setup styles; theatre, classroom, u-shape, cocktail, buffet and dinners
- 7 outdoor venues from beach to various gardens
- Highly-customizable menus of international or local cuisine and cocktails at any time of the day



## MEET

## GRAHA PARUMAN (CONFERENCE CENTRE 1)



- A 2,192.5 sqm of multi-functional space; a large pillar-free Grand Ballroom with various partition options to host up to 1,000, 6 flexible breakout rooms and multiple spacious pre-function areas
- Grand Ballroom with 8.6 m ceiling heights, floor to ceiling windows, affording dramatic views of the Indian Ocean
- Separate entrance and pre-function reception area for delegates
- An architectural masterpiece with strong Balinese design influences

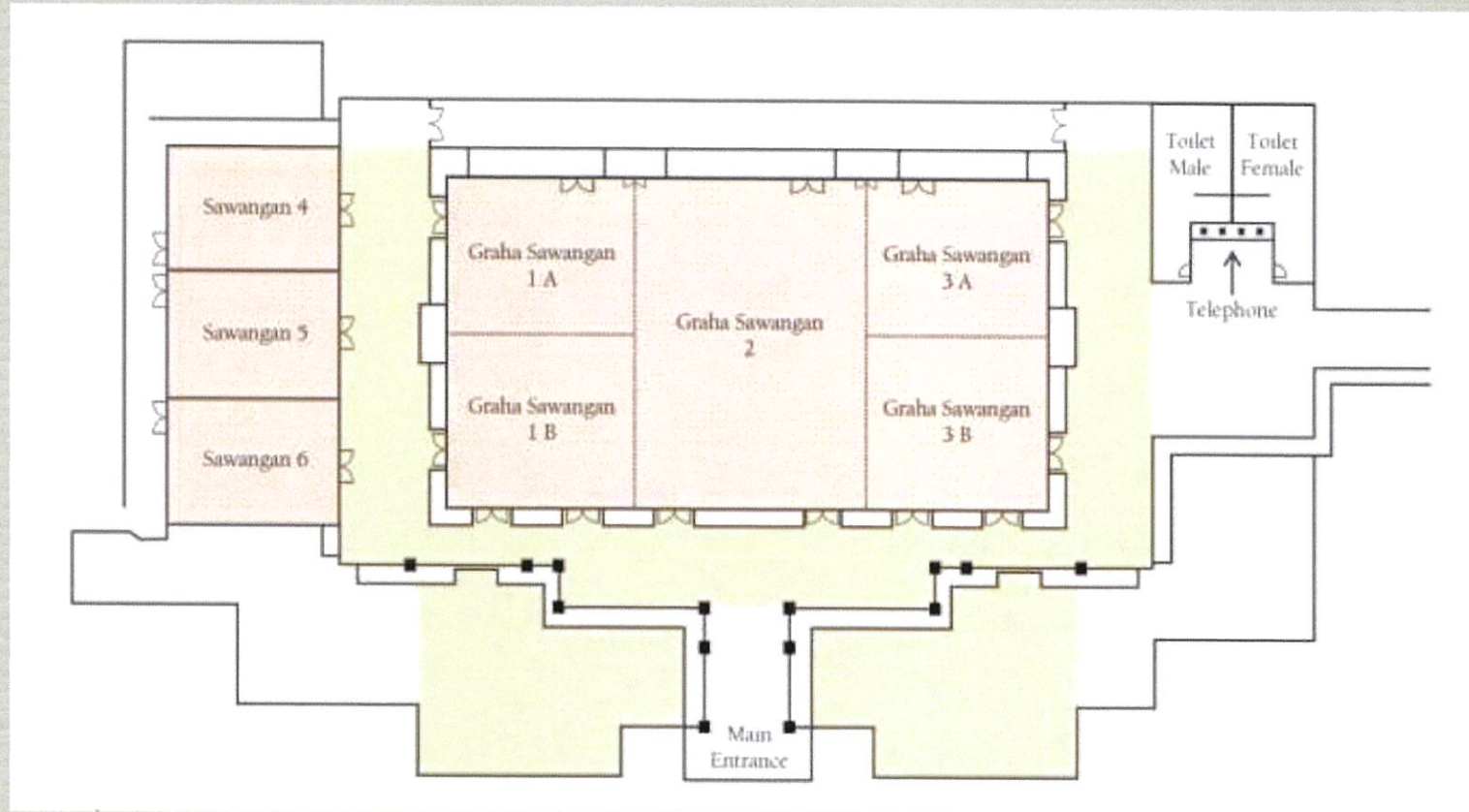
## MEETING CAPACITY CHART - GRAHA PARUMAN

NAME	DIMENSION (length x width x height in meter)	THEATRE	CLASS ROOM	BANQUET	U-SHAPE	CONFERENCE	HOLLOW SQUARE
Graha Paruman Ballroom (1+2+3)	42 x 24 x 8.6	1000	480	680	-		
Graha Paruman 1	14 x 24 x 8.6	300	120	240	75	90	90
Graha Paruman 2	14 x 24 x 8.6	300	120	240	75	90	90
Graha Paruman 3	14 x 24 x 8.6	300	120	240	75	90	90
Graha Paruman 1&2	28 x 24 x 8.6	600	210	420			
Graha Paruman 2&3	28 x 24 x 8.6	600	210	420			
Graha Paruman Meeting Room (4+5+6)	18.9 x 10 x 3.5	120	70	120	42	50	50
Graha Paruman 4	6.3 x 10 x 3.5	45	30	30	20	26	26
Graha Paruman 5	6.3 x 10 x 3.5	45	30	30	20	26	26
Graha Paruman 6	6.3 x 10 x 3.5	45	30	30	20	26	26
Graha Paruman 4 & 5	12.6 x 10 x 3.5	80	50	60	30	36	36
Graha Paruman 5 & 6	12.6 x 10 x 3.5	80	50	60	30	36	36
Graha Paruman 7	6.9 x 3.6 x 3.5	20					
Graha Paruman 8	8.7 x 6.7 x 3.5	50	18	30	18		
Graha Paruman 9	19 x 14 x 8.6	80	36	50	27	36	36
Pre-Function/foyer 1 (Villa Side)	52 x 5 x 4.7						
Pre-Function/foyer 2 (Kamita Side)	52 x 5 x 4.7						
Graha Paruman Front Side Terrace Garden	35.5 x 29	80		50			



## MEET

### GRAHA SAWANGAN (CONFERENCE CENTRE 2)



- A 1,051 sqm of multi-functional space; a 800 sqm Grand Ballroom with various partition options to host up to 500, pre-function areas and 3 breakout rooms.
- A dedicated entrance and reception area for delegates .

## MEETING ROOM CAPACITY CHART - GRAHA SAWANGAN

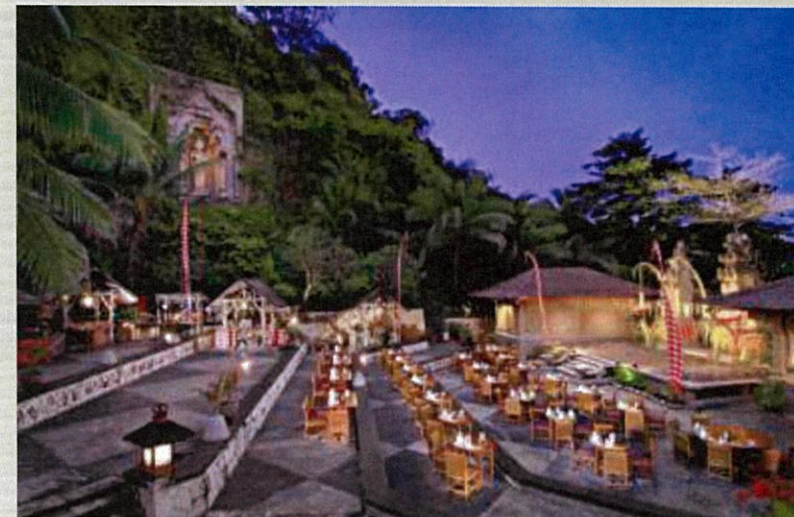
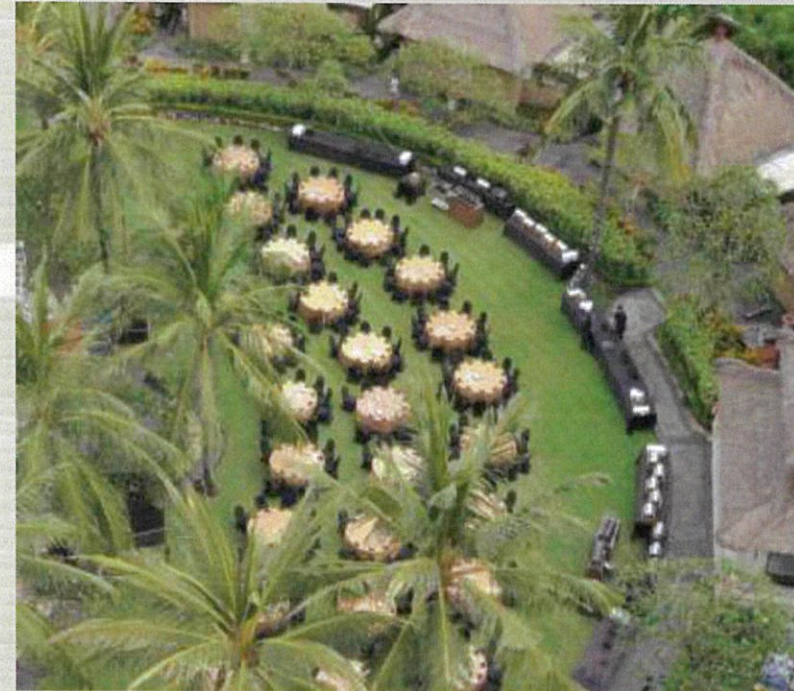
NAME	DIMENSION (length x width x height in meter)	CLASS ROOM	THEATRE	BANQUET	U-SHAPE	CONFERENCE	HOLLOW SQUARE
Graha Sawangan Ballroom (1+2+3)	38.5 x 18.5 x 6	300	500	480	-		
Graha Sawangan 1	18.5 x 12 x 6	90	160	120	50	88	88
Graha Sawangan 1A	9 x 12 x 6	50	80	50	38	44	44
Graha Sawangan 1B	9 x 12 x 6	50	80	50	38	44	44
Graha Sawangan 2	18.5 x 12 x 6	100	180	120	60	70	70
Graha Sawangan 3	18.5 x 12 x 6	90	160	120	50	88	88
Graha Sawangan 3A	9 x 12 x 6	50	80	50	38	44	44
Graha Sawangan 3B	9 x 12 x 6	50	80	50	38	44	44
Graha Sawangan 1&2	18.5 x 25.5 x 6	210	340	240	105	120	120
Graha Sawangan 2&3	18.5 x 25.5 x 6	210	340	240	105	120	120
Graha Sawangan 4	9 x 7 x 6	30	45	40	20	26	26
Graha Sawangan 5	9 x 7 x 6	30	45	40	20	26	26
Graha Sawangan 6	9 x 7 x 6	30	45	40	20	26	26

## MEET

### OUTDOOR VENUES

- Featuring a total of 4,225 sqm outdoor area ranging from beach to various garden venues
- Kupu Kupu Amphitheatre:** Ideal for incentive and social functions with an influence of Balinese art and design
- Serenity Beach:** Perfect venue for an intimate dinner for two, as well as large-scale ceremonies or receptions, corporate events and team building for up to 600 persons.

Venue	Size	Capacity (bqt)
Taman Sari Cliff Top Garden 1	165 sqm	70
Taman Sari Cliff Top Garden 2	165 sqm	70
The Shore Roof Top	79 sqm	30
Pool Side Garden	799 sqm	250
Beach Front Garden	638 sqm	200
Kupu Kupu Amphitheatre	244 sqm	200
Serenity Garden and Beach	2792 sqm	600



## WEDDINGS



Offering a wide selection of outdoor gardens and indoor venues for intimate destination weddings to large matrimonial celebrations, anniversaries and renewing of 'vows' in scenic Bali, with 2 distinctive wedding venues:

### **Wiwaha Wedding Chapel**

A cliff-top glass wedding chapel set against a stunning Indian Ocean backdrop with a separate indoor reception area and private lower garden.

### **Kamita Wedding Gazebo**

A perfect alternative next to the Graha Paruman Ballroom with an ocean view.

# HOTEL PHOTO GALLERY

EXECUTIVE LOUNGE



VILLA LOUNGE



WIWAHA CHAPEL



MEETINGS & SOCIAL EVENTS

